

What is CH-EPA

CH-epa offers functions that originate from the support we provide to our customers and users. Often it is the suggestions and ideas of customers which have been realized.

CH-epa provides two LIB's (chlib.cmmx and chlib2.cmm) which contain functions that a user can use from his script. However, most of these functions are called from the extended pull-down menu.

chlib.cmmx is a closed LIB, which offers special functions for CORTEX-M, which are called from the CT-M menu. These are functions that can be used in conjunction with ITM or ITM+ETM Trace.

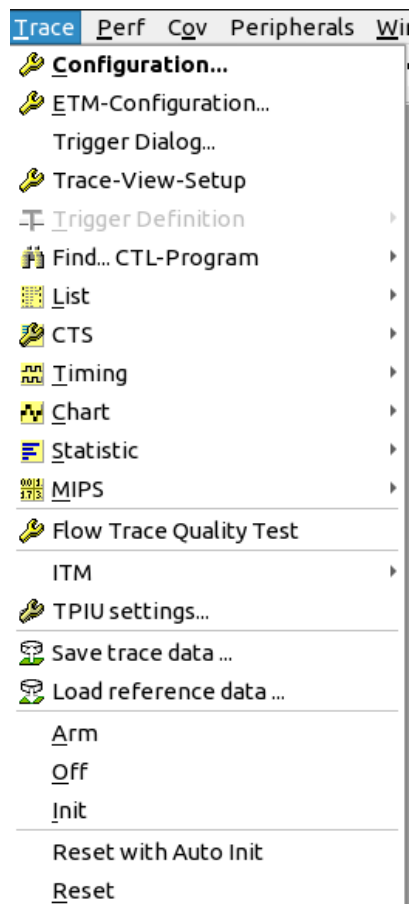
chlib2.cmm is an open lib which is used by the main PullDown menu.

Overview main menu:

3e File Edit View Symbols Var Break Run CPU Misc Trigger Trace Perf Cgv Peripherals Window Store Help

In addition to many small additions, the enhancements in the **Trace** PullDown Menu and in the **Store** section are particularly worth mentioning.

The Trace Menu



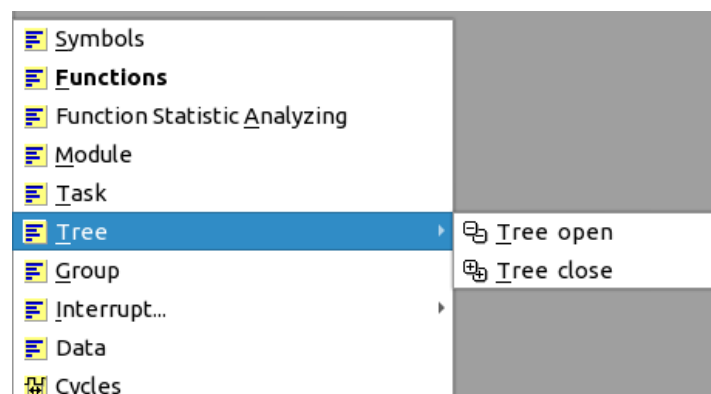
The Trace menu contains the most common trace evaluations.

However, it does not cover the entire range of functions. It is only a selection, but it makes access easier, especially if you only use the trace from time to time.

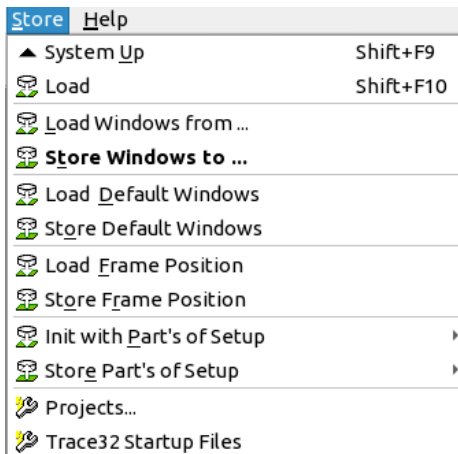
The Trace menu is structured in the same way as the commands are sorted.

First select the view type (List / Chart / Statistic) and then the view point (Symbols / Function / Module / Task /...).

However, to make full use of the possibilities please use the commands. You can either use the short form / long form of the commands or use the TAB function to complete them.

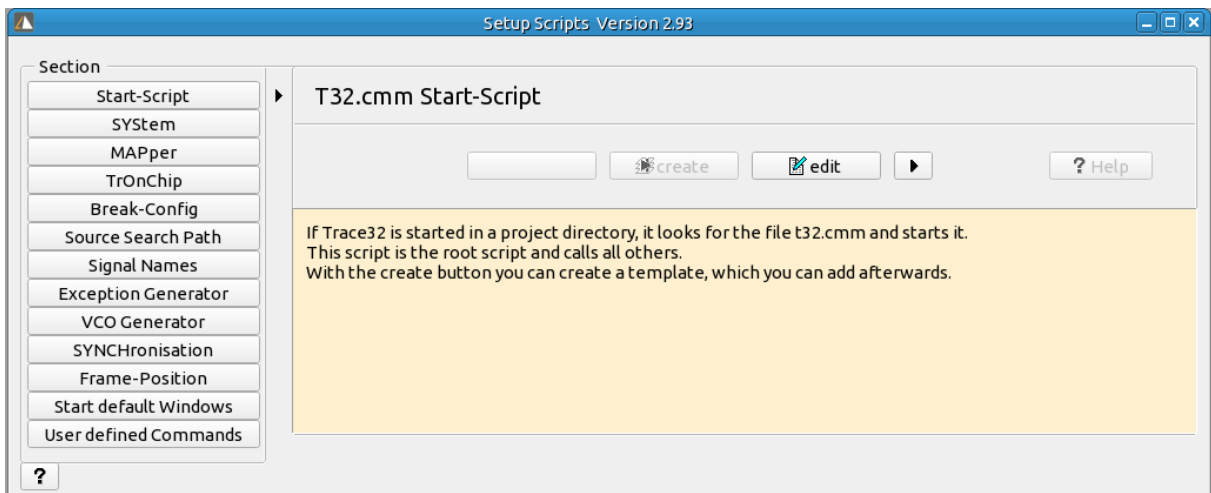


Store

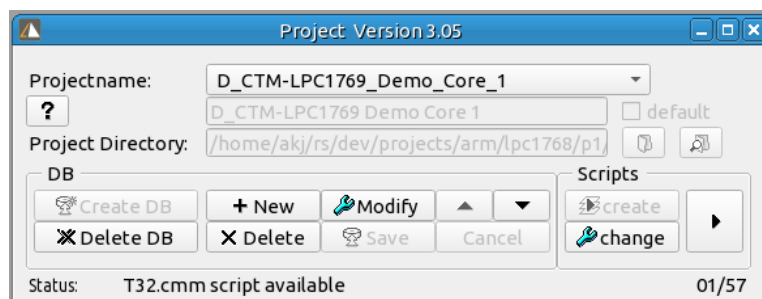


The CH-epa provides a script system which creates a separate script for each sub-area so that you can adapt them to the changes simply by selecting them from the menu.

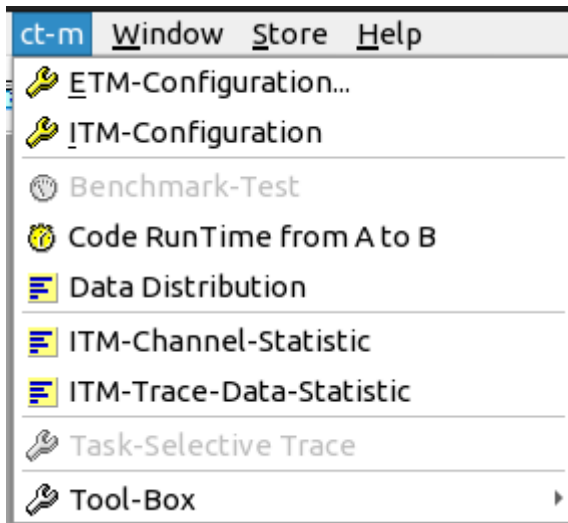
A function is implemented for generating the startup script, which can be used for a large number of devices without having to write scripts manually.



Project management is available to you, which can be used if you want to use many different projects or versions in parallel.



ct-m (Coretx-M)



Especially for the Cortex-M device with the 4 bit trace, or for devices that only have the SerialWireOut pin, a series of helpful evaluations have been created with which the data output via the ITM register can be analyzed.

You can install the ct-m menu with the following command:

```
menu.ReProgram ~/ct-m.men
```

If you enter this instruction in your t32.cmm start script, the menu will also be displayed after a restart.

